

It is all behind the scenes!

Speedy Import and Export of FNMA Data Files!

The 367 Loan Data Fields for Fannie Mae Form 1003 have been matched with the i-Servicing and i-Pools modules for a complete and quick import of data from any loan origination software or any vendor in the market that exports data files using the standard FNMA file format.

Exporting of data files using FNMA file format is also supported.

TECH SUPPORT

Our IN-HOUSE technical support is the best in the industry, helping both novice and expert users at every step of the way.

For more information on any of our products or services please visit us on the Web at:

www.goldenomega.net

Or email us at:

sales@goldenomega.net

5049 Robert J Mathews Pkwy.,

Suite 400

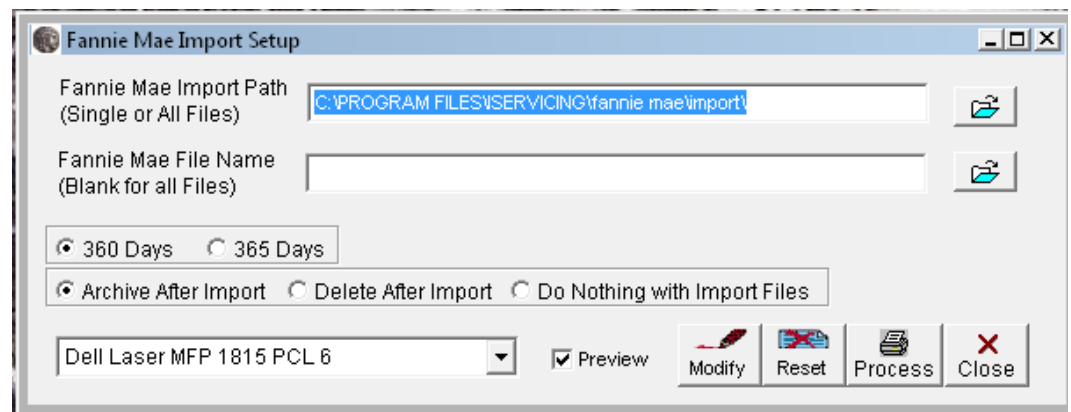
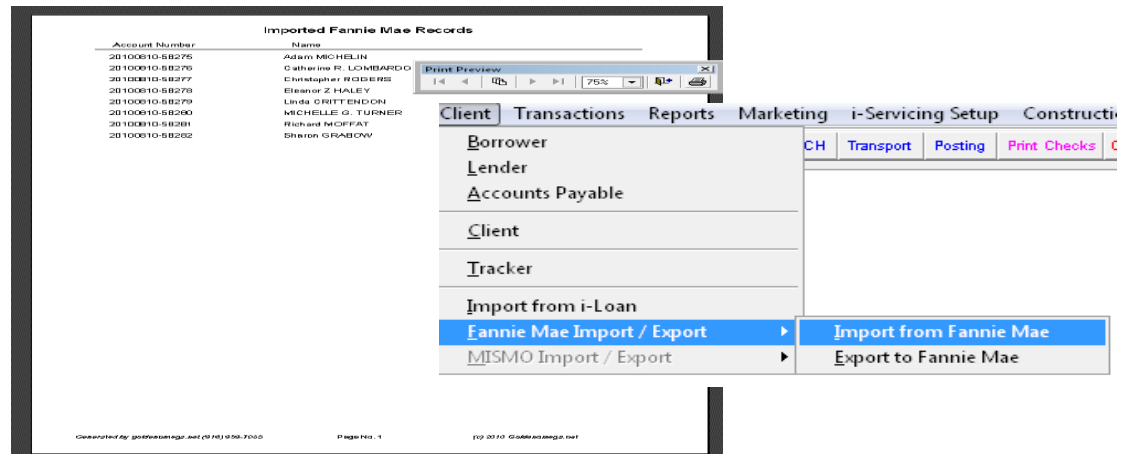
El Dorado Hills, CA 95762, USA

Phone 916.939.7083

Fax 916.939.7092

Fannie Mae Import/Export File Add-on Module

Windows® i-Servicing and i-Pools Software Add-on Module for Importing and Exporting Fannie Mae (FNMA) Data Files



Latest in Technology

- Microsoft Windows® 7/8/8.1 &10.
- Microsoft Outlook® email interface.
- LAN, CITRIX®, and Microsoft® Terminal Server.

Seven (7) reasons why choose Golden Omega.

- **Compliance** - RESPA, IRS, California BRE.
- **Efficiency** - Tracks loans, lenders & bank account.
- **Scalability** - Software meets every budget and grows.
- **Ease of Use** - Software with logical design.
- **Better support** - Prompt tech call responses.
- **Innovative Ideas** - Enhance mortgage software.
- **Clients Suggest** - Golden Omega listens.

SERVICES AVAILABLE

- Technical Support
- Installation and Setup
- Maintenance
- Customization
- Web Training
- On-site Training

